

# EVACUATION PLAN

## SUMMARY ACTION SHEET

## Normal Hours

In cases of emergency at the Bill Spilstead Complex for Canine Affairs, ***you should:***

- Immediately advise a member of DOGS NSW staff of the emergency
- Move immediately to the Assembly Point: in the general car park at the closest point to the Front Gates of the Complex.
- Wait for instructions from the Grounds Staff.

## After Hours

In cases of emergency after hours, ***you should:***

- Warn all persons present of the Emergency
- Move immediately to the Assembly Point: in the general car park at the closest point to the Front Gates of the Complex.
- Contact the relevant Emergency Authority – see below.
- Contact the relevant DOGS NSW contact – Ground Staff: 0418 649 125

## Shows

In cases of emergency, ***you should:***

- Contact the relevant DOGS NSW contact – Ground Staff: 0418 649 125 to manage the emergency situation.
- Contact the Show Secretary if DOGS NSW Ground Staff is not available.

**They should contact the relevant Emergency Authority.**

See below for all relevant emergency contacts.

- Warn all persons present of the Emergency. Use Public Address if operational.
- Where the emergency situation warrants it, instruct all persons to exit the Complex in an orderly fashion.
- Where the situation does not warrant the exit from the complex of all persons, instruct people to move to the Assembly Point: in the general car park at the closest point to the Front Gates of the Complex.
- If not already done so, contact DOGS NSW Ground Staff on 0418 649 125.

## Emergency Authority

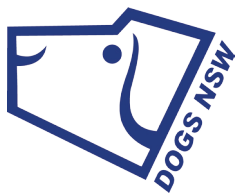
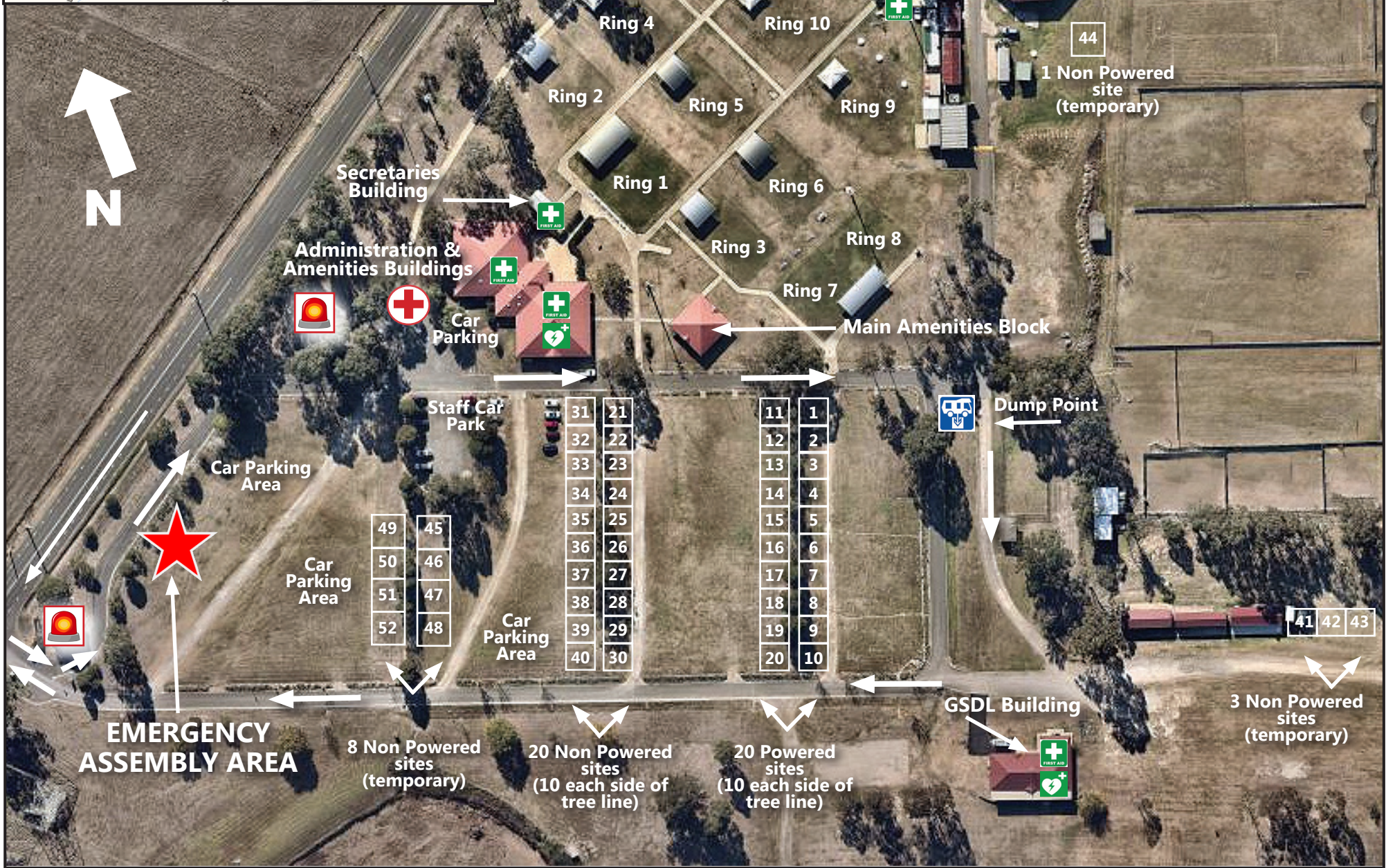
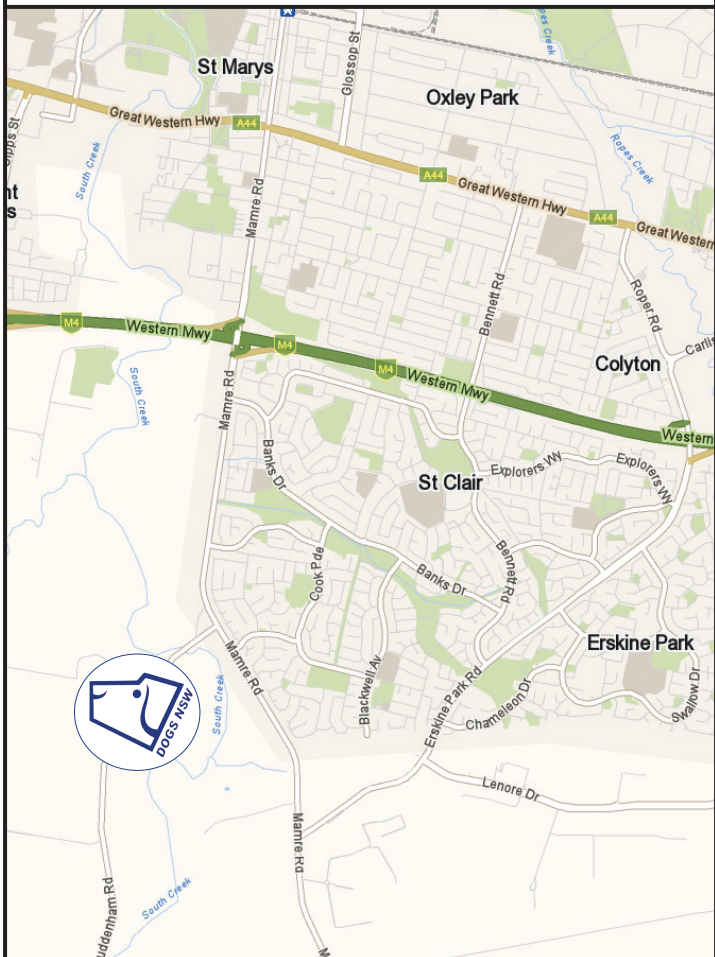
- **Police: St Marys – 02 9677 7499**
- **Fire Brigades:**
  - Mt Druitt – 02 9625 4403**
  - St Marys – 02 9623 3897**
  - Rural Fire Service Penrith Control Centre – 02 4734 7777**
- **Emergency (including Ambulance) – 000**

## DOGS NSW Contacts

- **Ground Staff:**  
**Chris Gydze** **0418 649 125**  
**Secondary Grounds Staff** **0403 099 488**



# LOCATION MAP



## DOGS NSW Site & Emergency Evacuation Plan

The Bill Spilstead Complex for Canine Affairs  
44 LUDDENHAM ROAD, ORCHARD HILLS NSW 2748  
Lot 1 DP217319 and Lot 2 DP547057

### AVAILABLE AMENITIES:

MAIN AMENITIES BLOCK:	11 female + 7 male toilets + 1 male urinal	1 disabled toilet + shower	1 female + 1 male shower
GORDON DOUGLAS BLOCK	6 female + 3 male toilets + 1 male urinal	1 disabled toilet	3 female + 3 male showers
GSDL BUILDING:	4 female + 2 male toilets + 1 male urinal	1 disabled toilet	
ADMINISTRATION BUILDING:	4 female + 2 male toilets + 1 male urinal	1 disabled toilet	
FIRST AID KIT LOCATIONS:	Administration Building, Amenities Building, GSD Building, Petcetera		
DEFIBRILATOR LOCATIONS:	Amenities Building, GSD Building		
EMERGENCY VEHICLE ACCESS POINTS	EMERGENCY VEHICLE MEETING POINT		