

AGILITY COMMITTEE

AGILITY HIRE TRAILER



**HIRE EQUIPMENT USAGE GUIDE
HIRE TRAILER PACKING GUIDE**

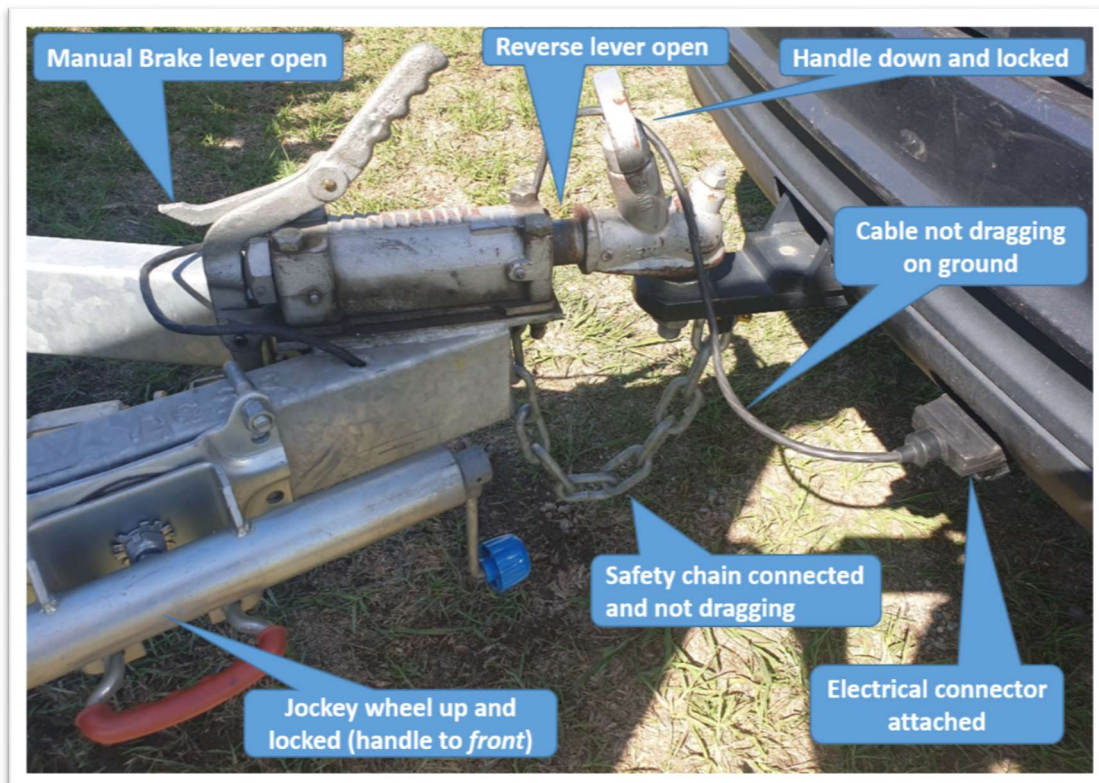
Hire Equipment Usage Guidelines

DISCLAIMER

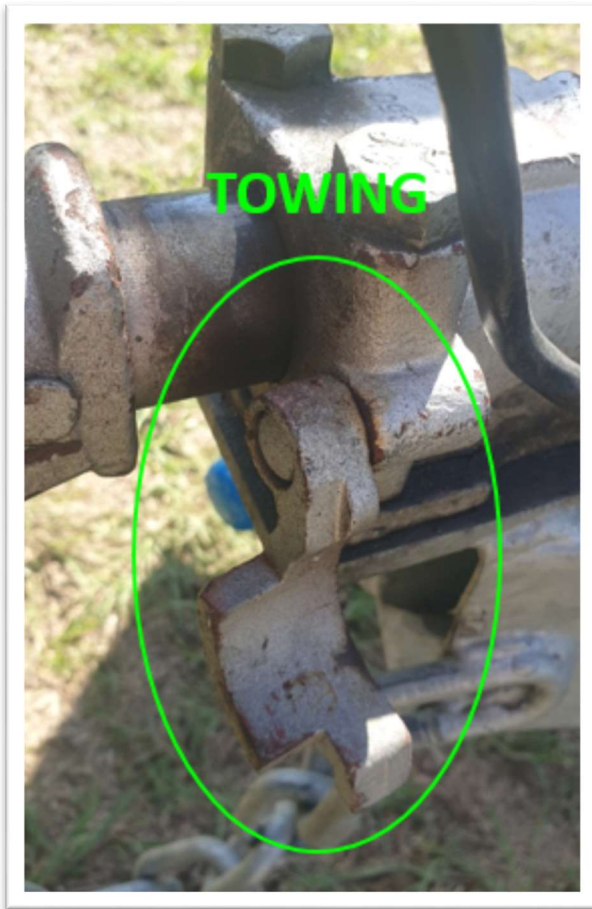
- Information provided in this guide is provided as is, and as a guide only.
- The hirer agrees that the use of the equipment carries with it dangers and risks of injury and the hirer agrees to accept all dangers and risks.
- The hirer will hire the equipment upon the terms and conditions in the Hire Agreement.

TRAILER

- The agility hire trailer, loaded with agility equipment as of March 2019, has a TARE MASS of 1360kg
- Trailer ATM is 2000kg
- The trailer has hydraulic over-ride brakes
- Trailer has a 9 pin flat electrical connector
- Trailer must be driven legally, within posted speed limits
- Driver must check that all lights are functional prior to towing the trailer
- Safety chain must be fitted using a legal shackle coupling (as provided)
- Driver must check, and is responsible, that equipment on the trailer is secured to the trailer
- Driver must check all of the following items to ensure the trailer can be safely towed;



- The trailer has hydraulic override brakes. When *reversing*, ensure the Reversing Stop lever is engaged to stop the trailer from auto braking. ***Disengage the lever for normal forwards towing.***



- Drive to the road conditions, and exercise more care if you are not familiar with towing a trailer.
 - > On long hills, ensure that vehicle speed is regulated using lower gearing to prevent brake overheating and loss of brakes
 - > On wet or winding roads slow down earlier and more than normal to avoid loss of control
 - > Always allow more room when overtaking and merging
 - > Take extra care when reversing to ensure the area is free of pedestrians and animals. Utilise an extra person to clear and supervise the area, and to guide the driver as the contact planks overhang the rear of the trailer by approx. 600mm.
- When the trailer is not coupled to a tow vehicle, use the jockey wheel to raise and support the front of the trailer so that it drains water, and apply the trailer handbrake to stop it from rolling.

AGILITY HIRE EQUIPMENT

- Most agility equipment on the DNSW Hire trailer is marked with the DNSW Logo, and “H” in an orange circle;



- Soft items are marked with “Dogs NSW” in permanent marker

EQUIPMENT HAZARDS

- It is recommended to either rope or mark off an area to store equipment when not in use to minimise trip and hazard risks to people and animals, or return unused equipment to its place on the hire trailer.
- Always secure any equipment stored on the trailer using the provided ratchet straps to protect any equipment from falling on people or animals, or damage to the equipment
- All contact equipment, hoop, broad and spread jumps must be positioned so that there is a safe front approach by the dog

DAMAGE

- DO NOT use damaged equipment as it may present significant injury risks to dogs and their handlers
- DO NOT attempt to repair any damaged contact equipment
- Report any equipment damage or missing equipment as soon as possible so it can be assessed, repaired or replaced.

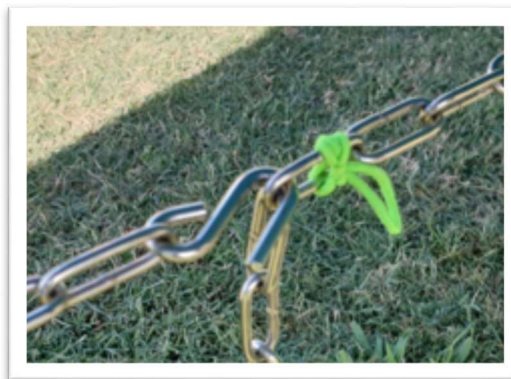
**Report all damaged or missing equipment to the Agility Committee
via Dogs NSW - info@dogsnsw.com.au**

HIRE EQUIPMENT USAGE GUIDE

A-FRAME



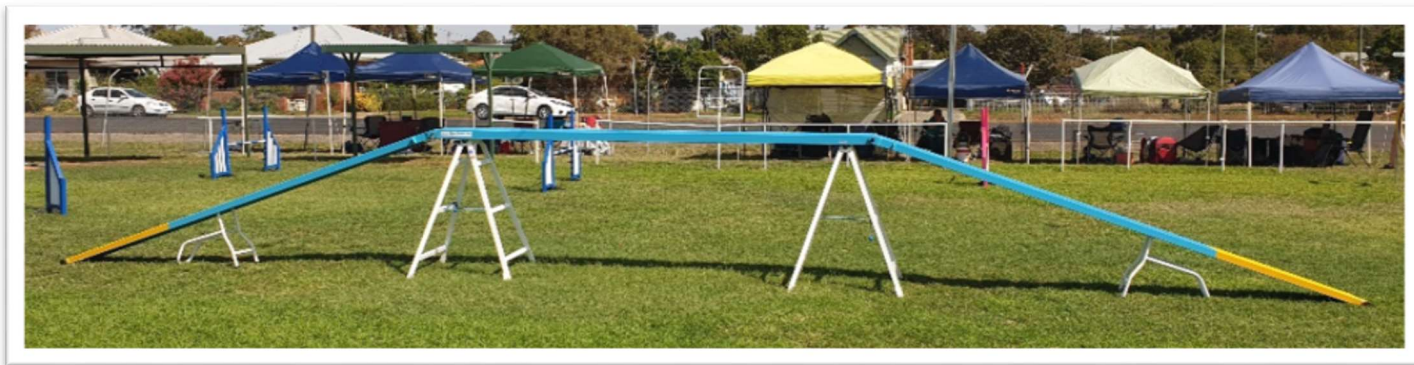
- **The A-Frame weighs 52kg.** A minimum of two people are required to unload, move, support or pack the A-Frame
- **DO NOT DISASSEMBLE the A-FRAME**
- Use 2 capable people to support the A-frame while connecting the centre chain
- Set the CENTRE CHAIN so that the bottom of the A Frame is between 3800mm and 3890mm to the outside edge. This will give an apex height between 1530mm and 1590mm



- Check and ensure R clip is fitted to centre pin (photo below)
- For storage, ensure chains are stored in the pockets with foam block stopper



DOG WALK



- There are three planks for the dog walk and one for the Seesaw. Store all four planks on the trailer in pairs with rubber sides facing each other.
- Store dog walk incline planks with PIN facing downwards and R clip installed.
- Dog Walk trestles (legs) are pre-set for a plank height of 1200mm.
DO NOT adjust height ropes unless absolutely necessary. Plank height is marked at top of each support trestle.

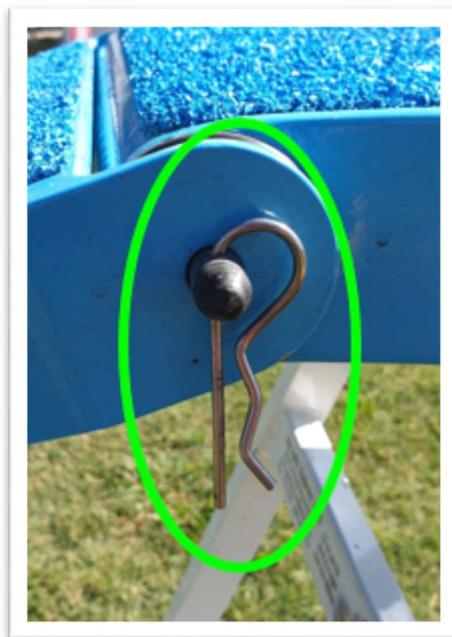


- Assemble trestles and centre plank first. Ensure they are stable.
- Align trestles to the marked locations on the centre plank

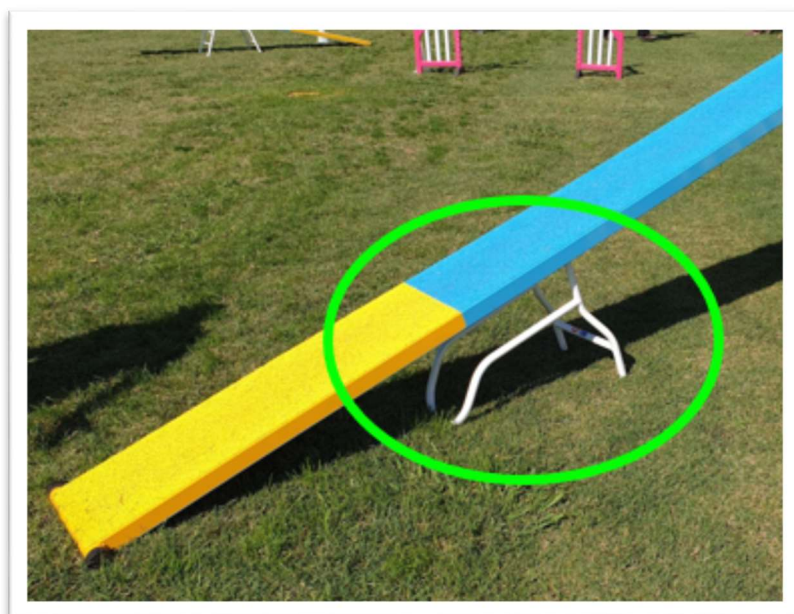


- Trestles can be pegged to the ground if required.

- Add each incline plank. Ensure R clip is facing down, ie round part at the top.



- Add incline supports. Align the round part towards the plank ground end.



SEESAW



- Seesaw base has connecting pin and R clip. For storage, the seesaw connecting pin and R Clip must be in the Seesaw *base*.
- The Seesaw *base* is stored in the trailer, on top of the tunnels
- Seesaw ballast is 300g of sand located behind the taped removable end cap on the down end of the seesaw plank. Adjust *ONLY* if necessary.

TUNNEL BAGS

- Tunnel bags are sand filled, and can weigh approximately 10kg each. Due care needs to be taken when handling
- If the Velcro joining strip is dirty, use a slicker brush to clean
- Tunnel bags must be placed so that the handle is on the **INSIDE**



WING JUMPS



- Use the coloured jump bars marked “WING”
- Spare jump cups are located in the accessories boxes in the front of the trailer

JUMPS

- Use the black banded jump bars marked “JUMP”
- Turn the aluminium bar on the base 90 degrees to support the jump
- Spare jump cups are located in the accessories boxes in the front of the trailer

HOOP



- Ensure **BOTH** upper and lower magnetic joins are properly connected
- Base should be pegged using four pegs. Ensure ends of pegs are not a hazard to dogs and handlers.



- **DO NOT** pull or push on the uprights to remove pegs, as it may bend the base
- To adjust the hoop height, **OPEN** the hoop and adjust **EACH** side separately. Pull out the black pin, and slide the hinge up or down. Scribe lines are marked to assist setting the correct height. Release the pin once at the desired height, and allow pin to locate in the hole.
- The black pins are spring laden, but can also become unscrewed. Keep black pins screwed in
- If the base becomes loose, use a 5mm allen key to tighten the screws.

WEAVERS



- Weaver Bases are stored upside down, on top of the trailer.
- Two people are required to avoid injury and avoid damage to other equipment when packing or unpacking equipment from the trailer
- Weave poles should alternate between 1 band and 2 bands

ELECTRONIC TIMING EQUIPMENT

- Batteries must be provided by the hiring Club.
- 28 x AA batteries are required to power each timing system. Farmtek estimate a new set of alkaline batteries will last approximately 50 hours.
- **Batteries must be removed from the timing gates and timer control box prior to hire return to prevent corrosion of battery contacts. Hiring Club should keep their batteries.**
- DO NOT remove antenna from timer control box.
- Timing gates will work in wet weather, but please wipe them down prior to storage
- Operating instructions are available from www.farmtek.net > Support
- One set of 4 metal gate bases is stored in a bag, and the second set is stored on a PVC pipe carrier.

TUNNELS

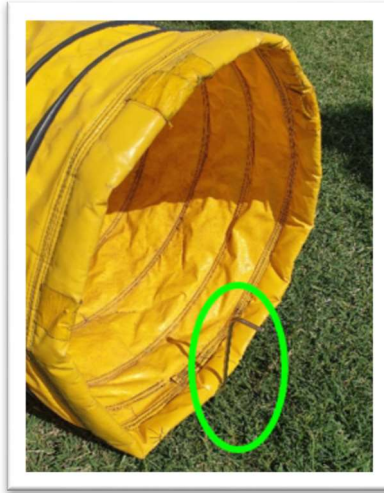


- Tunnels can weigh up to 25kg each
- One or two people may be required to move a tunnel
- Tunnels may be slippery if they are wet or damp.
- **EACH TUNNEL** has 6 sand bags (ie 3 pairs), and 2 tunnel collars (one at each end) to secure the tunnel to the ground. ***This is 5 restraints PER tunnel***
- Use a TUNNEL COLLAR at each end of the tunnel
- Where a tunnel is close to contact equipment, tunnel bags or collars must be used to ensure no part of the tunnel is able to touch any of the contact equipment whilst a dog is travelling through the tunnel
- For storage, each tunnel is compressed using 2 camlock straps



TUNNEL COLLARS

- Let the judge lay out the tunnels first.
- Use a TUNNEL COLLAR at each end of the tunnel
- Mark the bottom centre of where the tunnel end will be, then pull back tunnel ~0.5m



- Lay the collar on the ground, and centre the collar perpendicular to the tunnel marker on the ground, approx. 200mm – 300mm from the tunnel marker
- Using 4 pegs, peg the tunnel collar through the D shackles so the bottom of the tunnel collar is taut across the ground



- Reposition the tunnel over the top of the collar and realign the tunnel end to the tunnel marker



- Wrap the tunnel collar around the tunnel and fasten all 3 straps.
- There MUST be at least 200-300mm of tunnel (2-3 tunnel spring winds) between the end of the tunnel and the first strap on the tunnel collar.
- Tighten the outside 2 straps first, then the centre strap. They should be firm to tight, and not constrict the tunnel diameter. Tuck the strap ends in.



- If tunnel collars get wet or damp, please ensure they are dry prior to packing up.

BROAD JUMP



- Broad jump consists of 4 broad planks, 4 corner poles and 2 spacing guides



- If the ground is uneven, peg the spacing guide down to avoid any trip hazards

SPREAD JUMP

- 5 x 40mm spread bars are provided. Use 2 per spread jump, and one spare.
- It is important to assemble the spread jump correctly to prevent injury to dogs, particularly 200 and 300 dogs
- The horizontal steel bars in the base MUST be under the BACK of the spread jump, in the direction of travel, ie under the 200 and 300 jump cups.



- Ensure sides are fully inserted onto the base



Hire Trailer Equipment Check List

Front locker

- 2 x Farmtek timing systems ☐
- 2 x measuring wheels ☐
- 1 x tape measure ☐
- 1 x accessory box containing
hammer, and spare ratchet straps ☐
- 1 x accessory box containing
marking tape, golf tees, spare R clips, spare jump cups ☐
- 2 sets of numbered cones ☐
- 3 pencil cases containing pegs ☐
- 1 set of judges course layout signs ☐

Back locker

- 2 x broad jump sets ☐
- 8 x broad jump marker poles ☐
- 4 x broad jump distance guides ☐
- 1 bag containing;
 - 12 x black and white 32mm jump bars for non wing jumps ☐
 - 5 x black and white 45mm spread jump bars ☐
 - 14 x coloured jump bars for wing jumps ☐
 - 12 x white/blue weaver poles ☐
 - 12 x white/red weaver poles ☐

Trailer right side

- 1 x Seesaw plank ☐
- 3 x Dog walk planks ☐

Trailer left side

- 1 x A-Frame (**NO NOT DISASSEMBLE**) ☐

Trailer top

- 2 sets of 3 weaver pole bases – one silver, one green ☐

Trailer

- 10 pairs jump uprights ☐
- 14 pairs winged jump uprights ☐
- 2 x spread jumps (disassembled) ☐
- 2 x tyres ☐
- 12 x blue sandbags ☐
- 12 x yellow sandbags ☐
- 3 x 6m tunnels ☐
- 1 x 5m tunnel ☐
- 2 sets of 4 timing gate stands ☐
- 1 x bag containing 8 tunnel collars ☐
- 2 x dog walk support frames ☐
- 2 x dog walk incline supports ☐
- 1 x seesaw base ☐

Hire Trailer Equipment Packing Summary

Refer to following pages for full details.

Please repack the Hire Trailer in the following order;

1. Hoops
2. Winged jumps
3. Jumps
4. Spread jumps
Ratchet strap spread jumps (1)
5. Sand bags
6. Tunnels
7. Tunnel collars
8. Timing gate stands
9. Dog walk ramp supports
10. Seesaw base
11. Dog walk trestle supports
Ratchet strap across trestle supports and seesaw base (1)
12. Back locker
13. Front locker
14. Weaver bases
Ratchet strap across weaver bases (2)
15. Rear mesh panel
16. Dog walk and see saw planks
Ratchet strap all planks (4)
17. A-Frame
MINIMUM TWO PEOPLE ARE REQUIRED TO LIFT A-FRAME
Ratchet strap A-Frame (2)

Hire Trailer Packing Guide

HOOPS

- Set hoops to their lowest position (200) and lock pins in place.
- Place hoops against forward bar. Hoops will overlap, and one will be slightly open. This will allow enough space to pack the wing jumps.



WING JUMPS

- Add wing jumps in 2 rows of 14 wing jumps on each side of the trailer
- Suggest to load from the side and work from the back towards the front of the trailer
- Cups face outwards towards the front of trailer at approx. 45°
- Once in place, ensure wing jumps are pushed to the outside of the trailer



JUMPS

- Push both hoops approx. 50mm towards back of trailer.
- Add jumps upside down. 6 pairs will need to be loaded cups-to-cups to fit in. Add these to the right side of the trailer as shown in the photo below.
- Outside jumps should have the jump cups on the inside



SPREAD JUMPS

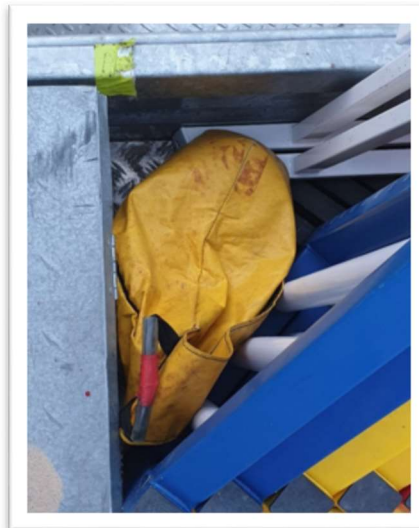
- Add Spread uprights in pairs, so they are positioned inside the hoop legs on the floor of the trailer
- Add Spread bases, with base towards front of trailer. Cross bars **MUST** be at the top



- *Attach Ratchet strap marked “Spread” as shown above*

SAND BAGS

- All sandbags are marked with DNSW.
- There are 6 yellow pairs and 6 blue pairs. Each pair of sandbags has one side hook Velcro (red handle) and the other side loop Velcro (yellow handle).
- Recommend to account for all 24 sandbags prior to packing.
- Place 2 sandbags in back left corner of trailer



- Place all remaining sandbags in 2 levels of sandbags between wing jumps and hoops. Ensure sandbags do not lean against the padded hoop.



TUNNELS

- Tunnels can be heavy. One or more people may be required to move a tunnel
- Compress each tunnel using 2 short cam lock straps prior to loading onto trailer.
- Place 2 tunnels between hoops and wing jumps.
- Place 2 tunnels between rear most wing jumps



TUNNEL COLLARS

- Place 8 tunnel collars into fabric bag
- Place fabric bag into front tunnels as shown in photo above.

TIMING GATE STANDS

- Place one set of timing gate stands in the back right corner



- Place bag of timing gate stands inside the rear most tunnels



DOG WALK RAMP SUPPORTS

- Place dog walk ramp supports on front tunnels, but under trailer top bar



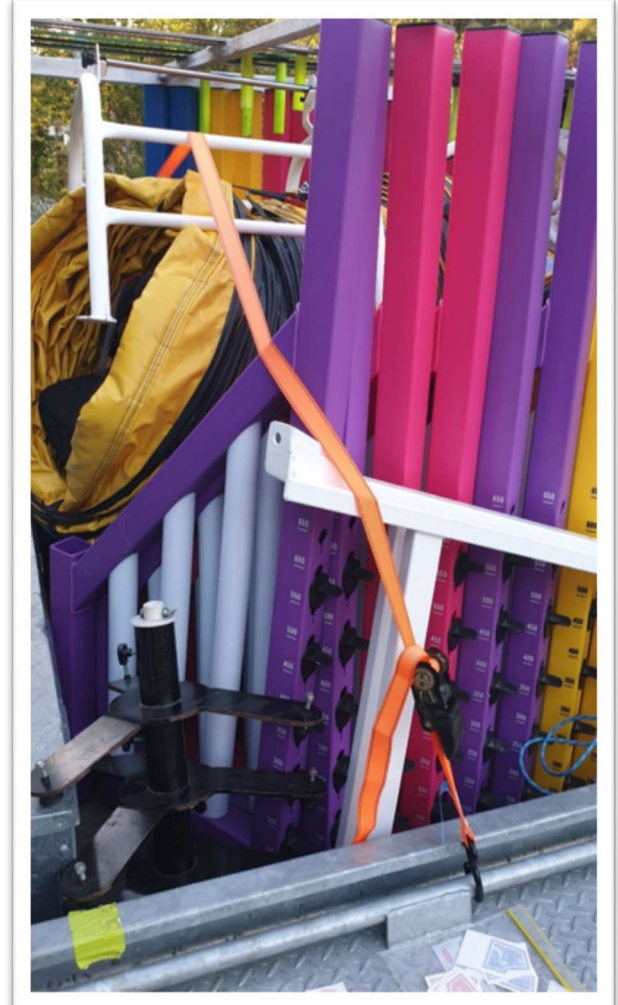
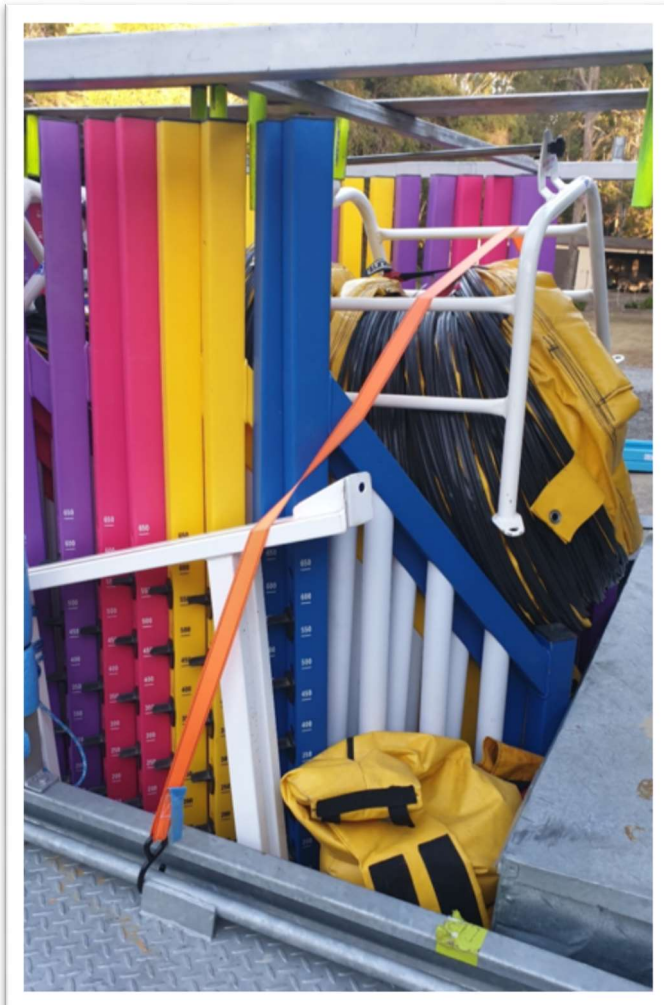
SEESAW BASE

- Place seesaw base on top of rear most tunnels, but under trailer top bar



DOG WALK TRESTLES

- Place one dog walk trestle on each side of the trailer between the wing jumps and trailer side. Hinge is positioned to the front of the trailer.



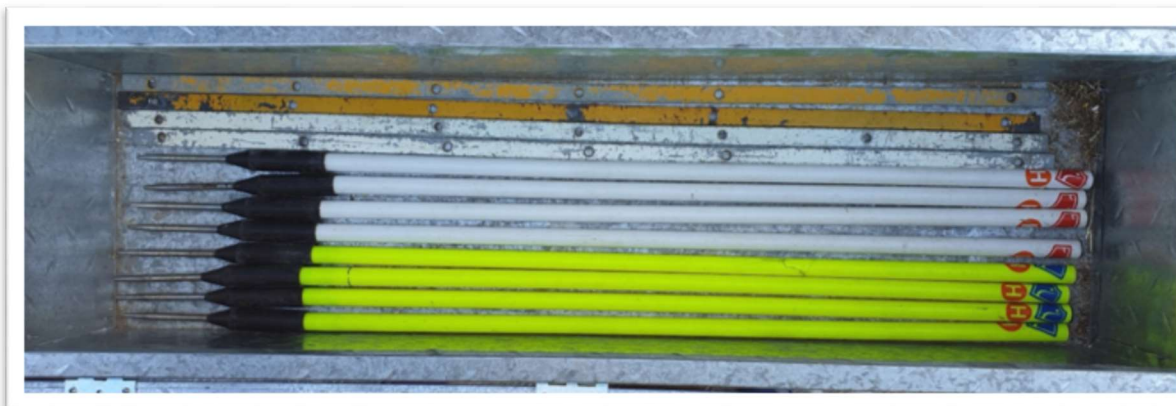
- *Use ratchet strap across trestles and seesaw base to secure load.*
- *NOTE: Place strap UNDER seesaw base pin so it does not get bent*

BACK LOCKER

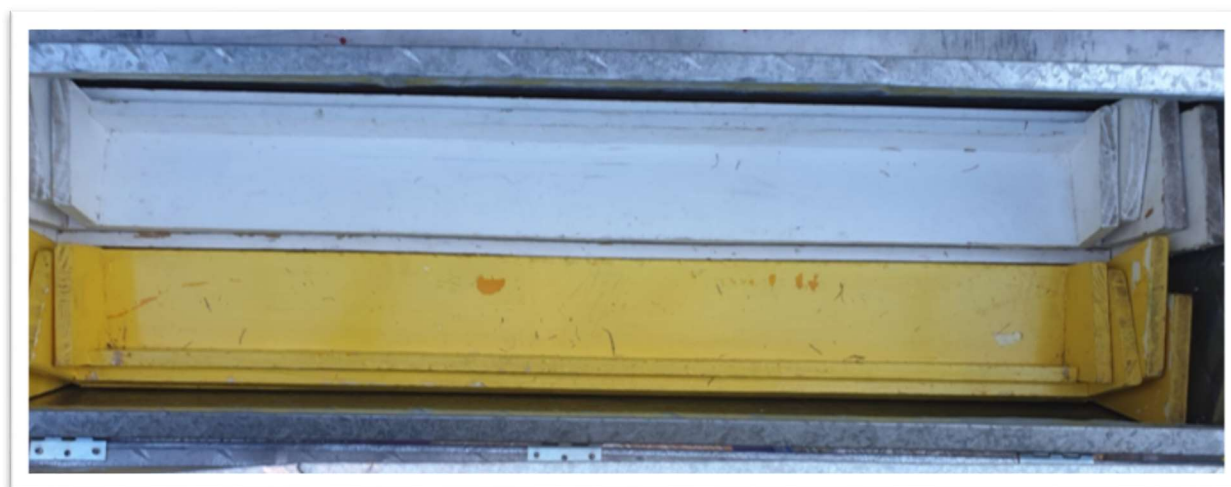
- Account for, and place all poles below in the canvas zippered bag
 - 12 x black and white 32mm jump bars for non wing jumps
 - 5 x black and white 45mm spread jump bars
 - 14 x coloured jump bars for wing jumps
 - 12 x blue weaver poles
 - 12 x red weaver poles



- Place broad poles and measuring guides in locker base



- Place nested broad planks in locker



- Add canvas bag with poles



- Close lid

FRONT LOCKER

Accessory boxes should be packed as per photos below;



- Add 2 timing systems, numbered cones and course layout signs to the locker



- Add measuring wheels, 3 peg bags, tape measure and 2 accessory boxes



- Close and lock lid with combination padlock

WEAVER BASES

- Pack weaver bases upside down
- The weaver pole pins should locate between the jump stands on the front of the trailer
- There should be minimal overhang at the rear to the trailer



- *Add 2 ratchet straps across weaver bases. Note: Ratchets go on the PLANK side.*
- *Front strap must be placed over the jump bases*
- *Rear strap must wrap once around the trailer top support bar to stop the weavers sliding during transport*

REAR MESH PANEL

- The bottom of the panel will fit on top of the rear locker. If locker is too high, move some of the poles around so the lid closes
- Align and fit back mesh panel onto the retaining pins located on the left and right uprights
- Add R clip on each side to the retaining pin to hold the panel in place

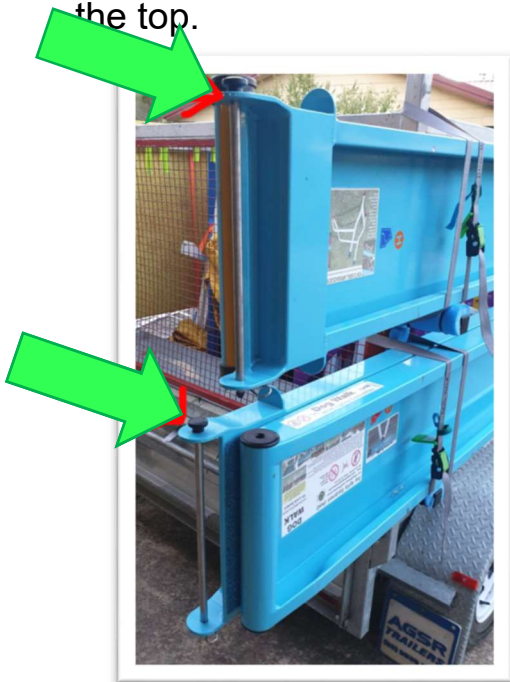


DOG WALK AND SEESAW PLANKS

- Add planks in pairs with rubber surfaces facing each other
- Ensure the plank is positioned so that the yellow painted section is approximately 200mm behind the front trailer upright as marked in the photo below. This will ensure there is approximately 600mm overhang at the rear of the trailer



- Ensure pins on dog walk planks are in the downward position, ie black knob to the top.



- Add 4 “dog walk” marked grey camlock straps to secure in place
- *NOTE rear straps go around and through the mesh panel*

A-FRAME

- **MINIMUM TWO PEOPLE ARE REQUIRED TO LIFT A-FRAME**
- **DO NOT DISASSEMBLE A-FRAME TO PACK**
- Ensure chains are stored in their pockets inside the A-Frame, and held in place with a small block of foam
- Position A-Frame so that the bottom tubes overhang the rear support post, and the front tube overhangs the front support post.
- Ensure the connecting pin points down, ie the black knob is at the top



- *Secure the A-Frame using the two ratchet straps marked "A-FRAME"*



PACKED TRAILER

- Trailer should be neat and tidy.
- Check there are no loose objects including strap tails

