



NEWS

Safety around the house



An essential part of responsible dog ownership is ensuring we provide a safe environment. Whether you have one dog, or a number of dogs, it is of the utmost importance we keep our companions safe from any hazards or danger.

It's worth taking time to look around everywhere your dogs sleep, play, walk, etc to assess for potential items that could be harmful. Look around your home and check that power

cables can't be easily accessed, keep small toys or items that could be a choking hazard out of reach and toxic, or harmful substances, must be locked away. Some poisons seem very palatable to dogs, so be sure where these items are secured, that there can be no way your dogs can access them. Don't let your dogs raid the 'kitchen bin,' as it may contain scraps that could lead to dire consequences, if ingested. Although uncommon today, many old painted surfaces may also contain lead, so do not allow your dogs to chew any surface that has been painted.

Venture outside to where your dogs play and survey all areas. Exercise areas should be free from rubbish, grass trimmed down, edges done, faeces regularly picked up and disposed of appropriately. Many of us live in snake-prone areas, so eliminating hiding areas for snakes and spiders is a must. Rubbish strewn around your yard can be a trip hazard to yourself and potentially encourage pests, rats or mice to move in. These pests could then bring diseases that could infect your dog(s). Be sure that plants in any dog accessible areas in your house or garden are not of a toxic species OR you fence off those areas containing harmful plants. See link for list of plants dangerous to dogs:
<http://www.australiandoglover.com/2015/09/common-plants-toxic-to-your-dog.html>.

Secure fencing is of the utmost importance. Check that your dogs can't dig under fencing or break through boundary fences. The type of fencing in and around your property must not have gaps that could trap or harm your dogs. To eliminate disturbances from people or animals outside your boundary, have solid fencing to block the visual disturbance. The use of snake and mouse mesh, fixed to the base of boundary

fences, will assist in preventing these pests from entering your property. Bird netting over unroofed exercise pens will prevent prey birds from attacking your dogs. Many dog pens have elevated entrance gates these days, so make sure your dog's legs cannot get caught in the gaps of weldmesh-type pens, when entering or exiting the pens. If there is potentially a risk of injury, affix some small gauge mesh around the gates, making it impossible for feet/legs to be caught.

Check garden furniture to ensure that your dog's legs can't be caught and broken. A particular danger is the slatted seating, where your dog's legs could slip between the gaps.

There are many more potential hazards depending on your individual setup, so be vigilant in checking that potential risks are minimised.

Deirdre Crofts
Animal Welfare & Community Liaison Officer

600mm x 30M ROLL

Rodent & Snake Mesh

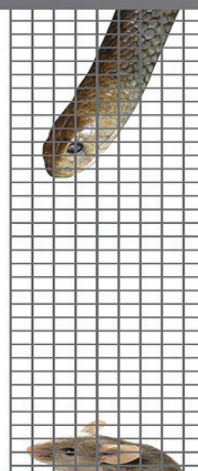
6.5mm x 6.5mm Welded Wire Mesh
0.6mm Diameter Wire
Hot Dipped Galvanised

- Ideal cage lining mesh for small animals and birds. Keeps out predators like rodents and snakes.
- Suitable for blocking access of rodents and snakes to gardens and dwellings.



WARNING: It is recommended that new galvanised wire mesh used in aviaries and pet enclosures be treated to remove excess zinc that could possibly harm the animals. Loose zinc should be removed followed by scrubbing with a mild solution of white vinegar (2 cups in a 10L bucket of water). Rinse thoroughly with fresh water.

www.australianmesh.com.au



Visit the Dogs NSW website for expert advice and information about activities.
www.dogsnsw.org.au



Follow us on Facebook to keep up with the latest news.
www.facebook.com/DogsNSW