

DRAFT

Draft summary of submissions to DogsNSW Obedience and Tracking Committee
May 2019

1. CLASSES Page 6

Summary: remove separation of A and B classes

Rally Advanced Class - RA

~~Rally Advanced A~~

~~This class shall be for dogs that have qualified for the Rally Novice (RN) Title but are not eligible for the Rally Advanced (RA) Title.~~

~~Rally Advanced B~~

~~This class shall be for dogs that have qualified for the Rally Advanced (RA) Title and~~ **This class shall be for dogs that have qualified for the Rally Novice (RN) Title.**

All exercises are judged off lead. All dogs must enter and leave the ring on lead.

Once a dog has qualified for the Rally Advanced (RA) Title it may continue to compete in this class indefinitely.

~~Rally Advanced A and B~~

~~Rally Advanced A and B~~ must have between twelve (12)- seventeen (17) stations (start & finish not included) and use a minimum of 3 to a maximum of 10 stationary exercises; and requires one jump.

Courses shall have a minimum of 4 Advanced level stations, including the jump.

Rationale

Due to lower numbers in Rally Classes, the cost of additional prizes is becoming a burden for clubs.

Rally Excellent Class- R.E.

Summary: remove separation of A and B classes

~~Rally Excellent A~~

~~This class shall be for dogs that have qualified for the Rally Advanced (RA) Title, but are not eligible for the Rally Excellent (RE) Title.~~

~~Rally Excellent B~~

~~This class shall be for dogs that have qualified for the Rally Excellent (RE) Title and may continue to compete in this class indefinitely.~~

This class is for dogs which have qualified for the Rally Advanced (RA) Title. Once a dog has qualified for the Rally Advanced (RA) Title it may continue to compete in this class indefinitely.

~~Rally Excellent A and B~~

The Excellent class is performed off lead. It must have fifteen (15)- twenty (20) stations (not including Start and Finish) and use a minimum of 3 to a maximum of 10 stationary exercises and requires two jumps (not consecutive). Courses shall have a minimum of 6 Advanced level stations and a minimum of 4 Excellent level stations, including the jumps.

Rationale

Due to lower numbers in Rally Classes, the cost of additional prizes is becoming a burden for clubs.

2. SCORES

Summary: Specify that failure to clear a jump is a non-qualifying score

10 point deduction for each of the following:

~~-Incorrectly performed station (including Failure to clear a jump)~~

Rationale

In performing a jump the dog should clear the bar or the broad jump. Failure to do so should be a Non Qualifying Score (NQ) as it the case in Obedience and Agility disciplines.

Non-qualifying (NQ) scores shall be given for:

~~-Where a station is rendered unusable~~

- Failure to clear a jump

Rationale

There is contradiction in the present rules in 10 point deduction and Non qualifying scores in regard to the jumps.

By deleting

'Where a station is rendered unusable' and inserting "Failure to clear a jump" this contradiction would not exist.

Surely, in performing a jump the dog should clear the bar or the broad jump. Failure to do so should be a Non Qualifying Score (NO) as it the case in Obedience and Agility disciplines.

3. RING PROCEDURE

Summary: specify that distance marker to be used

Insert a new item after "Distance Between Jumps"

Distance Markers

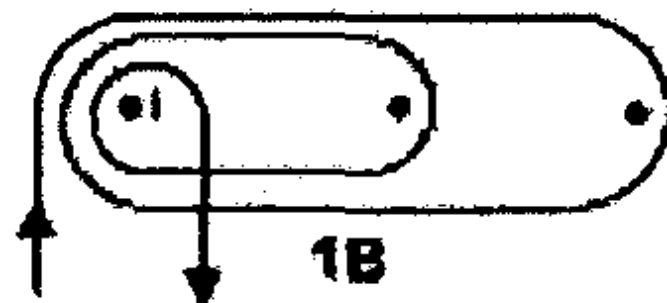
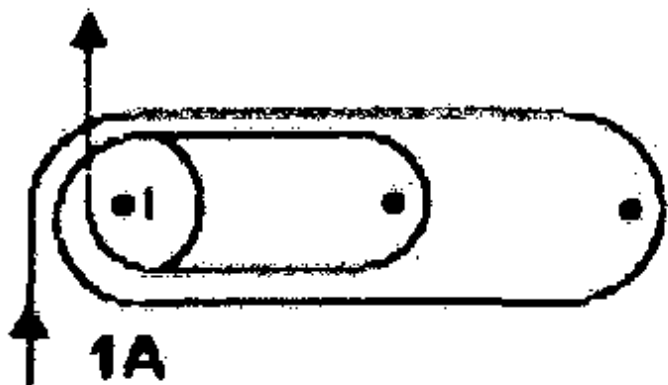
At stations where Handlers are required to proceed a certain distance from their dog, the Judge should indicate the distance with a small marker.

Rationale.

Marking the distance would mean all Handlers would go the same distance and create a level playing field.

21. Spiral Right - Dog Outside

Summary: Add diagram of dog's path

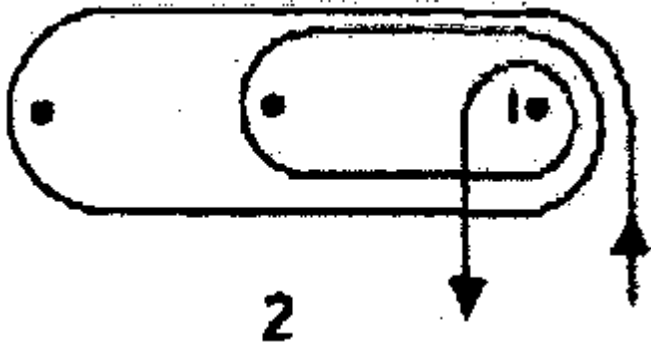


Rationale

This diagram was included in the workshop session with the original Rally O signs and provides and provides an excellent description of how the signs should be completed

21. Spiral Left - Dog Inside

Summary: Add diagram of dog's path



Rationale

This diagram was included in the workshop session with the original Rally O signs and provides and provides an excellent description of how the signs should be completed

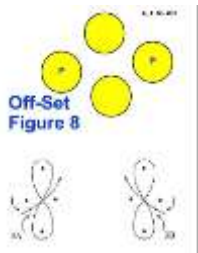
Sign 39 Offset Figure Eight

Summary:

1. Move current Offset Figure Eight (Sign 39) from Advanced to Excellent with new sign number
2. Change Offset Figure Eight in Advanced Class – remove distractions
3. Renumber other Excellent and Masters signs as required

EXISTING

39. Offset Figure 8 - This exercise requires two pylons or posts placed about 2.45 – 3.00 metres apart, around which the team will perform a complete Figure 8, crossing the centre line three times. Two distractions will be arranged to the sides of the Figure 8 about 1.55 – 1.85 metres apart. Entry may be between the pylons or posts and the distraction on either side. The distractions will consist of two securely covered containers with tempting dog treats; however, dog toys may replace one or both containers, or may be placed next to the containers. The exercise sign may be placed on or near the cone where entry is made into the Offset Figure 8.



PROPOSED

39. Offset Figure 8 - This exercise requires two pylons or posts placed about 2.45 – 3.00 metres apart, around which the team will perform a complete Figure 8, crossing the centre line three times. ~~Two distractions will be arranged to the sides of the Figure 8 about 1.55 – 1.85 metres apart. Entry may be between the pylons or posts and the distraction on either side. The distractions will consist of two securely covered containers with tempting dog treats; however, dog toys may replace one or both containers, or may be placed next to the containers. The exercise sign may be placed on or near the cone where entry is made into the Offset Figure 8.~~

39. 53 Offset Figure 8 - This exercise requires two pylons or posts placed about 2.45 – 3.00 metres apart, around which the team will perform a complete Figure 8, crossing the centre line three times. Two distractions will be arranged to the sides of the Figure 8 about 1.55 – 1.85 metres apart. Entry may be between the pylons or posts and the distraction on either side. The distractions will consist of two securely covered containers with tempting dog treats; however, dog toys may replace one or both containers, or may be placed next to the containers. The exercise sign may be placed on or near the cone where entry is made into the Offset Figure 8.

RATIONALE

Moving from the Novice class to the Advanced class is a significant challenge, particularly for handlers and dogs who are new to the sport.

Station 39 Offset Figure Eight is a far greater increase in difficulty for dogs than the other challenges posed by progressing to working off lead, because of the distractions. It is far more difficult for most dogs than other Advanced stations. The level of difficulty of the station is more suited to the Excellent class.

A further benefit of the change is that there will be an additional moving station at Excellent level, which will provide more options and variety in the Excellent and Masters courses. Excellent and Masters courses must include a minimum of four Excellent stations. However, there are currently only six Excellent stations, of which only two are moving stations.

The suggested change means that there is still a Figure Eight exercise in the Advanced class, with the course options provided by that exercise.